

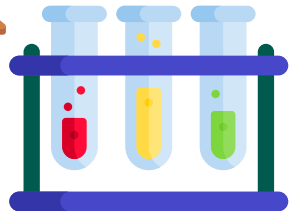


LJ University
University with a Difference



LJ SCHOOL OF APPLIED SCIENCES

(B.Sc. / DMLT / M.Sc.)



www.ljku.edu.in

About LJ University

LJU is intended to be University with a difference with the following agenda:

- 🕒 Skilling local youth as per cutting edge needs of local and global industries
- 🕒 1 % of our graduates to be job creators or self employed
- 🕒 Access to higher education to around 1 lakh youth in next decade
- 🕒 Benefit to nearby community through community engagement program
- 🕒 Collaboration with local industries to work on their challenges
- 🕒 Capacity building of human resources of local MSMEs and large industries
- 🕒 Attracting global academic communities through international collaborations for syllabus designing, delivery and evaluation.
- 🕒 Nurturing graduates to be job ready and also make them entrepreneurial



Established
1980



Institutes
29



Qualified Faculties
1,000+



Students
20,000+



B.Sc. Alumni
1,500+



LJ Alumni
50,000+

About LJSAS

LJ School of Applied Sciences aims to promote curiosity, learning and application ability among its students. Through its unique pedagogic strategies, it is nurturing students to understand basic and applied science and become problem solver in their future role as scientists, technologists, thinkers and leaders of the society. We at LJSAS are innovating in teaching-learning methodology, research, practice orientation, mentoring, and student evaluation and value addition process along with overall holistic development of young students.

Courses Offered @ LJSAS

1. Bachelor of Science (Hons.) in



Chemical Science (for Group-A & B Students)



Bio-Sciences (for Group-B Students)

(Student took admission in B.Sc. in Bio-Sciences can choose their Major subject after first year - amongst Microbiology / Biotechnology / Biochemistry)

2. Diploma in Medical Laboratory Technology



(DMLT) (for Science Graduate)

3. Master of Sciences in



**Chemistry / Microbiology / Biotechnology /
MLT**

Teaching Pedagogy.



**Industry and
skill based
Practical
syllabus**



**Conceptual
Theory
syllabus**



**Special electives
and Certificate
courses**



**Hands On
trainings and
workshops**



**Seminars and
Panel discussion**



**Industrial
visits and
Internship**



**Encourage
students for Post
Graduation and
Research**



**Prepare
students for
competitive
exams**



**Funding for
Startup and
Innovation**



Bioincubator

Facilities at LJ Campus



Qualified and Experienced Faculties



15 acres lush green campus



Ventilated classroom and well equipped Labs



Library with Books, Magazines and Research Journals



Seminar Hall, Auditorium and Open Air Theatre



Sports grounds and Courts



Hygienic Canteen and Café



**Transportation
(Call 9376012777)**



**Accommodation Outside Campus
(Call 9023515478)**



Dedicated Placement Cell

Scopes after B.Sc. / M.Sc.

B.Sc. & M.Sc. are most versatile courses as it open the window for students towards ample of opportunities, here are few of them...

Further studies



MBA



MCA



B.Ed.



M.Ed.

Research



Genetic



Ph.D.



Pharma



CRO

Industry



Agriculture



Environment



Healthcare

Job



Academic



Consultancy



Entrepreneurship

and many many more ...

Placements



Counseling Note



Contact us



Website
ljku.edu.in



Facebook Page
@ljiasofficial



WhatsApp
LJU B.SC. INFO



ljias@ljinstitutes.edu.in



B.Sc. / DMLT
7016480249 / 7016662877



M.Sc.
7359100053

LJ Campus, Near Sarkhej-Sanand Circle
Off. S.G. Road, Ahmedabad-382210